



2025 ANNUAL REPORT

ENCOURAGING
FAITH TO FUEL
SCIENTIFIC
DISCOVERY



CONTENTS

PAGE 3

Letter from the
President

PAGE 5

Meet the Staff

PAGE 6

Meet the Board

PAGE 7 - 11

Featured Projects

PAGE 12-17

Communications

PAGE 18 - 19

Operations



Letter from the President

The AI revolution is upon us. General-purpose tools such as ChatGPT, Claude, Grok, Copilot, and Gemini are changing the way we work and raising the specter of wide-scale job losses. The implications of this revolution are complex issues deserving our attention. This attention should be grounded in a theology of what human purpose, responsibility, and thriving is, as well as a scientific and technological sophistication that accurately represents where we are and what plausibly lies ahead. But perhaps just as important, the AI revolution should prompt us to dust off our best understanding of what role jobs play in our lives and what role we play in our jobs, particularly as Christ-followers. That is, the promises and challenges of new task-general AI should encourage us to articulate a theology of work and vocation.

And yet, a theology of work and vocation, particularly around science professions seems to be in particularly short supply. The growing body of social scientific research concerning how Christians think about the sciences reveals a generally high degree of enthusiasm over all, but an under-participation of Christians in science professions, especially at universities. Partly this may be due to wariness around certain topics that have potential implications for how we think about the nature of humans and morality; but more likely most Christians do not see how doing scientific work can be a divine calling. Further, Christians and non-Christians alike have little understanding of how one's worldview — Christian or not — impacts one's activity in the sciences or interpretation of the findings. It is commonly thought that "Science" somehow exists separately from the values, assumptions, and motivations of individual scientists.

Blueprint 1543's contribution to such challenges in 2025 emphasized the ways in which one's faith might encourage, energize, and otherwise impact one's work as a scientist. To be an integrated science professional, we think it is helpful to periodically reflect upon how one's Christian faith:

- provides a strong foundation for scientific enterprises of any sort;
- motivates particular topics of study;
- influences the research structures, systems and methods one uses;
- impacts how one interprets and communicates scientific findings; and
- changes the way we treat our colleagues, collaborators, opponents, and the general public.

You could think of these five dimensions as the Why?, Which?, How?, So what?, and Who? questions of one's scientific vocation.

In addition to publishing a small book meant to guide present and future scientists through these questions, we also published a series of blogs on the topic. But more work needs to be done. We look forward to publishing a Spanish-language version of *How Can Your Faith Fuel Scientific Discovery?* and developing additional support resources on this topic, perhaps even with the assistance of AI!

Thank you for your continued interest and support of Blueprint 1543's mission!

Justin L. Barrett, Ph.D.
President



Meet the Staff



Justin Barrett
President



Rebecca Dorsey
Vice President



Holly Crain
Senior Director of
Finance and Operations



Skylar Barrett
Communications
Manager

Meet the Board



Mari Clements



Jonathan Reitz



John Sharp



Justin Barrett



Rebecca Dorsey



Featured Projects



GLAD Workshop



Blueprint 1543's Rebecca Dorsey and Joanna Leidenhag convened a three-day gathering to begin a new phase of collaboration among project leaders in the Templeton-funded project *God, Language, and Diversity: Spiritual Flourishing in Neurodiverse and Multilingual Communities*. Participants shared project updates, collaboratively worked through challenges teams were facing, and developed plans for upcoming outputs. The gathering strengthened connections across the group and left participants with renewed clarity and focus for their individual projects.



SoRSE Workshop

Most academic conferences follow a familiar pattern: dim rooms, dense presentations, and limited opportunities for meaningful connection. The SoRSE Workshop, hosted by Blueprint 1543, was designed to challenge that norm.

Convening 17 interdisciplinary teams funded through the Templeton World Charity Foundation's Science of Religious and Spiritual Exercises (SoRSE) initiative, the workshop brought together scientists and spiritual practitioners studying practices such as fasting, prayer, meditation, confession, communal meals, lament, and group singing. Rather than focusing solely on presenting findings, the gathering created space for shared reflection, relationship-building, and collaborative problem-solving.

Drawing on insights from social psychology, hospitality, and interdisciplinary design, the workshop was intentionally structured to treat participants as whole persons. This approach fostered psychological safety, encouraged honest dialogue, and enabled deeper intellectual engagement. Participants were not simply sharing research, they were learning how to think, work, and build together more effectively.

The result was not just a successful event, but a compelling model for how research communities can be cultivated to produce more meaningful, connected, and impactful work.



The Collaboration Guide

WHEN SPIRITUAL PRACTITIONERS AND SCIENTISTS COLLABORATE FOR GREATER IMPACT

B
1543

A RE-SORSE GUIDE ON COLLABORATION: FOR THE SCIENCE OF RELIGIOUS AND SPIRITUAL EXERCISES (SORSE)



Emerging directly from the workshop, Blueprint 1543 developed *When Spiritual Practitioners and Scientists Collaborate for Greater Impact: A Re-SORSE Guide on Collaboration*, a resource designed to capture and extend the lessons learned from these interdisciplinary partnerships.

Drawing on the lived experience of 17 scientist-practitioner teams, the guide moves beyond abstract theory to offer a candid look at what collaboration actually requires. It highlights both the promise and the complexity of working across disciplines, institutions, and traditions, particularly when studying sacred practices embedded in real communities.

The guide provides practical tools for those engaged in similar work, including principles for effective collaboration, common obstacles encountered in the study of religious and spiritual practices, and key questions to guide projects from inception to completion. It also foregrounds the importance of trust, shared purpose, and mutual understanding, emphasizing that meaningful collaboration is not incidental but essential for producing research that is both rigorous and relevant.

By distilling these insights into an accessible and actionable format, the guide serves as a foundational resource for researchers, practitioners, and organizations seeking to build collaborations that are not only productive, but transformative.

Bringing the Work to Life

To extend the reach of the SoRSE initiative, Blueprint 1543 produced two short videos that capture both the spirit of the workshop and the substance of the research.



Don't Call It a Conference offers a lighthearted critique of traditional academic events, contrasting them with the SoRSE Workshop's relational, human-centered design. It highlights how intentional structure, shared experiences, and attention to participants as whole persons can foster deeper collaboration and more meaningful outcomes.

The Longing for Something More turns to the research itself, exploring how scientists and spiritual practitioners partnered to study longstanding practices such as fasting, prayer, meditation, and communal rituals. It illustrates how these collaborations open new avenues for understanding human flourishing.



Together, these videos provide an accessible entry point into the SoRSE initiative, complementing the collaboration guide by showing both the vision and the practice of interdisciplinary collaboration.

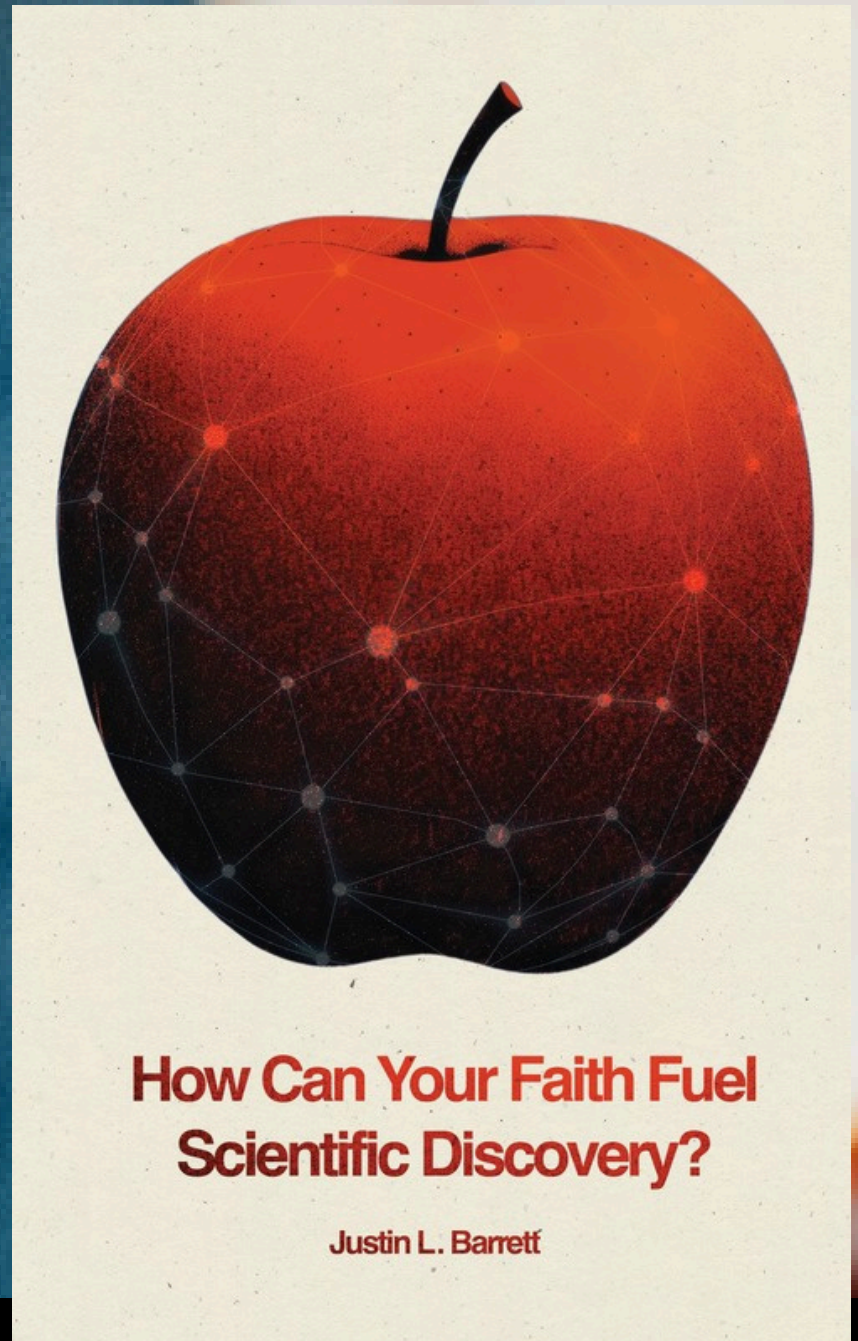
This project was made possible through the support of a grant from Templeton World Charity Foundation, Inc (funder DOI 501100011730) through grant TWCF-2023-32967. The opinions expressed in these publications are those of the author(s) and do not necessarily reflect the views of Templeton World Charity Foundation, Inc.



2025 COMMUNICATIONS



A NEW BOOK



In [How Can Your Faith Fuel Scientific Discovery?](#), Dr. Barrett invites emerging scientists to see their research not merely as a career, but as a vocation shaped by Christian commitments. Framed around five guiding questions, the book equips readers to make thoughtful choices about research directions, methods, and professional relationships—helping ensure that scientific work serves both human flourishing and faithfulness to God. By connecting everyday research decisions to deeper theological values, the book offers a practical framework for pursuing science that is both excellent and meaningfully integrated.



theology



science

DR.
JUSTIN L.
BARRETT

▶
YouTube

Tech Prudence on Dr. Barrett's YouTube Channel



In 2025, [Dr. Justin Barrett's YouTube channel](#) served as a key communications platform for extending Blueprint 1543's work on technology and human flourishing to a broad public audience. Through the Tech Prudence series, the channel explored how insights from cognitive science, anthropology, and Christian theology can inform wiser engagement with emerging technologies.

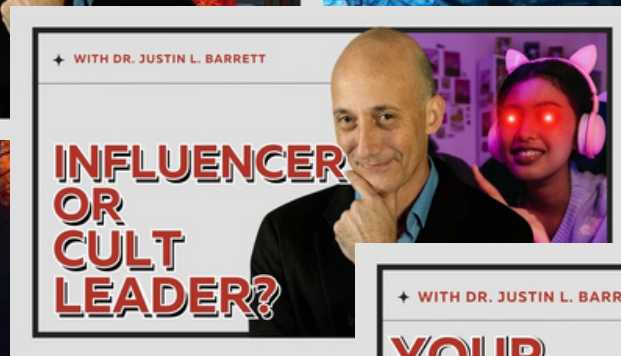
The series began by challenging the common assumption that technological progress is inevitable and beyond meaningful evaluation. Drawing on themes from the Riddell Memorial Lectures, Dr. Barrett invited viewers to reconsider whether new technologies must simply be accepted—or whether thoughtful resistance and discernment are both possible and necessary.

Building from this foundation, the series introduced a set of guiding questions designed to help anticipate which technologies are likely to spread rapidly and become difficult to undo. Episodes examined how ease of use, alignment with basic human motivations, and intuitive design allow tools such as smartphones and social media to embed themselves deeply into everyday life, often functioning as powerful “super-stimuli” for our social minds.

As the series developed, attention shifted to relational and communal consequences. Viewers were encouraged to ask whether technologies strengthen or weaken social bonds, how assumptions about convenience shape our vision of the good life, and how even small design choices can subtly reshape human relationships. Together, the series reflects Blueprint 1543's commitment to public-facing, integrated inquiry that brings scientific insight and theological wisdom to bear on contemporary challenges.



THE PSYCHOLOGY OF CULT LEADERS AND CULTS



In 2025, [Dr. Justin Barrett's YouTube channel](#) explored the psychological dynamics that underlie cult-like influence, drawing on established research in persuasion and social behavior. Across a three-part series, these videos translated complex insights from psychology into accessible frameworks, helping viewers understand how patterns of influence, group formation, and authority can shape belief and behavior.

The series developed this foundation by tracing how these same dynamics can extend beyond traditional settings—first into digital environments, where social media can amplify influence and reshape how trust and authority are formed, and then into everyday community contexts.

By connecting these ideas to contemporary life, including the kinds of communities people regularly participate in, the series encouraged thoughtful reflection and discernment. Rather than focusing on extreme cases alone, it highlighted how subtle psychological patterns can emerge in familiar spaces, equipping viewers to engage communities—both online and offline—with greater awareness and wisdom.

Interfaith Dialogue

Dr. Justin Barrett's long-form public interviews extended Blueprint 1543's mission of integrated inquiry to wide and diverse audiences throughout 2025. In conversations with Subboor Ahmed and with Khalid on the *Incisive Thoughts* channel, he engaged thoughtfully with Muslim hosts and audiences on questions at the intersection of cognitive science, philosophy, and theology. Drawing on *How Can Your Faith Fuel Scientific Discovery?*, Dr. Barrett addressed the "integration problem" faced by many young scientists—encouraging them to pursue science as a genuine vocation without compartmentalizing their faith. He also emphasized how scientific inquiry evokes awe at the order and beauty of the natural world, and how faith commitments can positively shape scientific culture through humility, charity, and ethical discernment beyond scientism.

These dialogues were notably interfaith in character, modeling respectful and substantive engagement between a Christian cognitive scientist and Muslim interviewers and institutions. The conversations closely echoed themes from Dr. Barrett's Sharif University of Technology lecture, "Fitrah, Sense of the Divine, and Human Nature: Crafting an integrative research program." Across the interviews he explained why belief in God and the supernatural is psychologically natural, highlighting resonances between the Christian *sensus divinitatis* and the Islamic *fitrah*. By carefully distinguishing empirical findings from metaphysical claims, these exchanges demonstrated Blueprint 1543's commitment to rigorous, public-facing scholarship that builds constructive bridges across scientific, philosophical, and interfaith conversations.



KHALID



SUBBOOR AHMED

Honoring a Legacy: Dr. Jeffrey Schloss

LIVING WATER

The most widely viewed content on Blueprint 1543's YouTube channel in 2025 was a special edited video honoring the retirement of Dr. Jeff Schloss after more than four decades of teaching at Westmont College. Originally delivered as part of Westmont's chapel program, the message was reshaped for a broader audience as a tribute to Schloss's remarkable legacy as a teacher, mentor, scholar, and follower of Jesus.

In this special video, Living Water, Schloss shares one of the most personal and formative stories of his life. Reflecting on his teenage years as a restless and searching young man on the verge of dropping out of school, he recounts how an unexpected encounter with God redirected the course of his life. Through honest questions, unlikely friendships, and a prayer of surrender, Schloss describes how divine love met him in a moment of deep uncertainty and opened the door to a new life of faith and intellectual exploration.

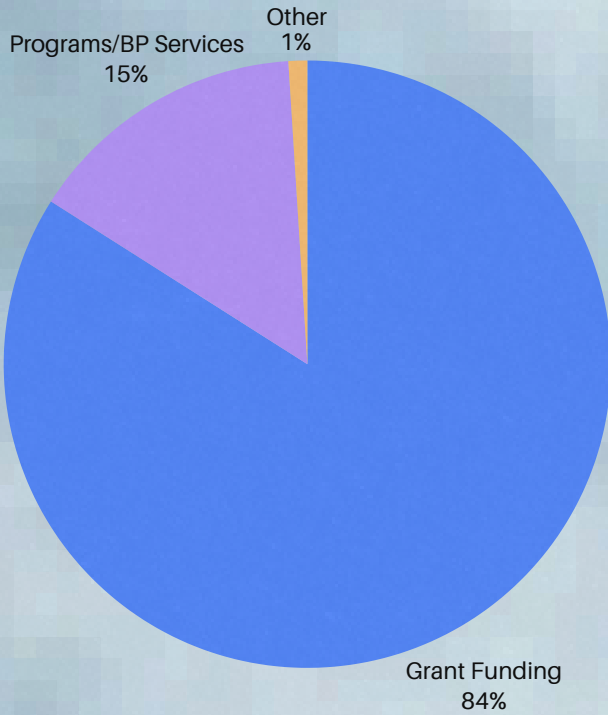
The story captures the qualities that have defined Schloss's decades of influence at Westmont—curiosity, humility, intellectual depth, and compassion—while pointing to the spiritual foundations that have guided his work. The strong response to this video reflects the continuing impact of scholars whose lives integrate faithful Christian commitment with rigorous intellectual engagement. Blueprint 1543 is grateful to Westmont College for providing the chapel footage that made this tribute possible.

2025 OPERATIONS

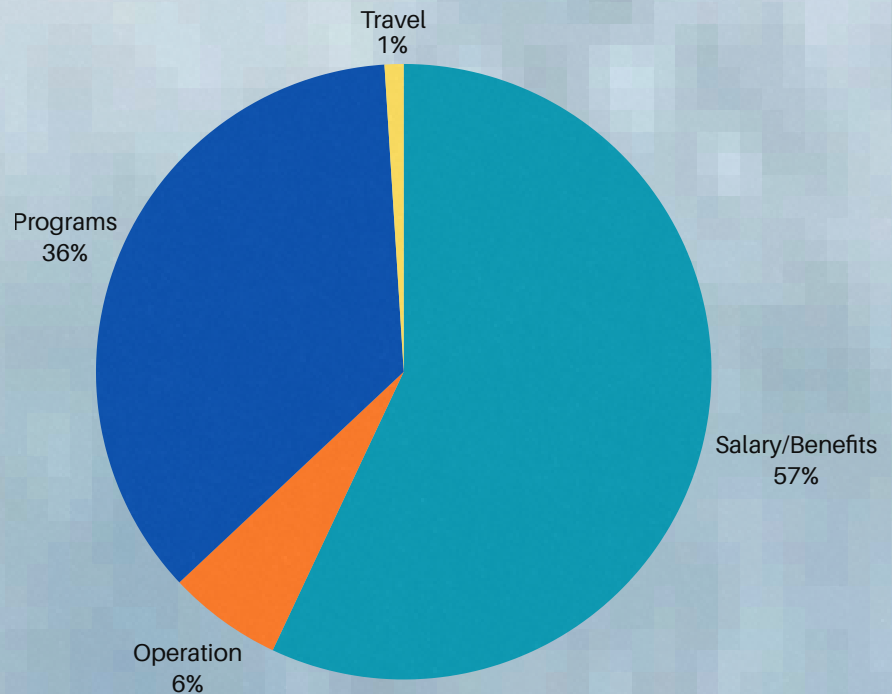


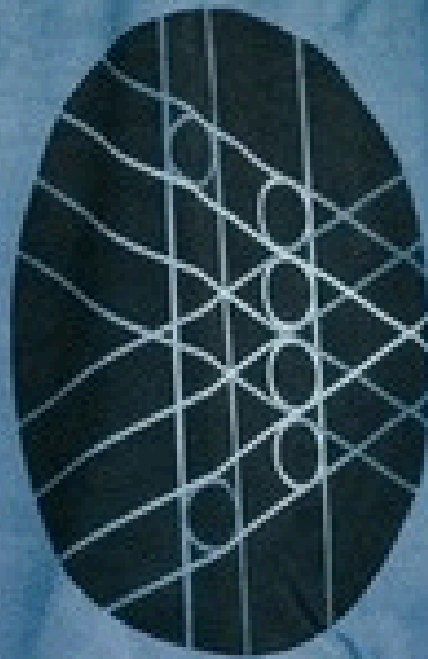
Financials

% of Total Revenue



% of Total Expenses

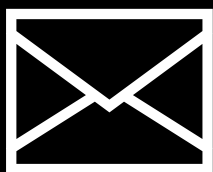




BLUEPRINT 1543



Knoxville, TN



connect@blueprint1543.org



www.blueprint1543.org